



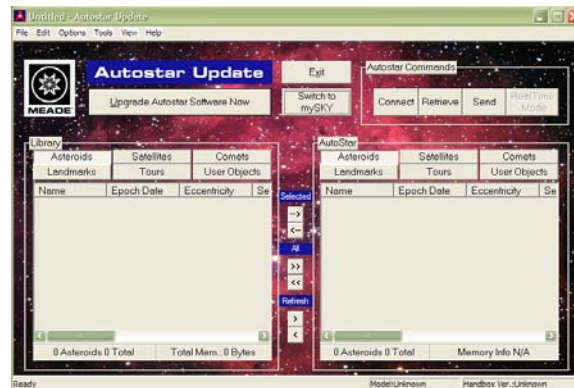
Meade Instruments Corporation

27 HUBBLE, IRVINE, CALIFORNIA 92618 U.S.A.

(949) 451-1450 ■ FAX: (949) 451-1460 ■ www.meade.com

Windows 7(64-bit) Installation Instructions for AutoStar Updater 5.9.2

1. Open up the Meade Autostar Updater program.



2. The following popup window will open; select **Yes**.

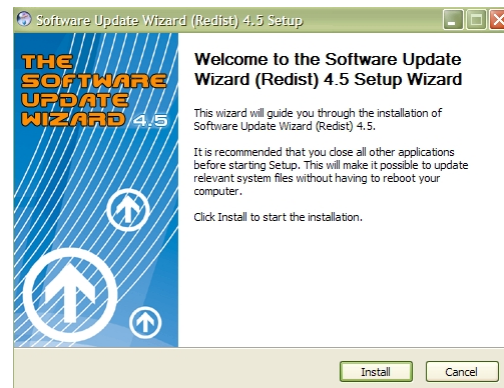
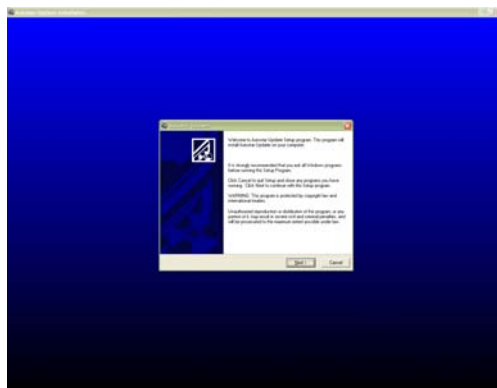


3. The new Autostar update file will download to your computer. When complete select **Ok**.

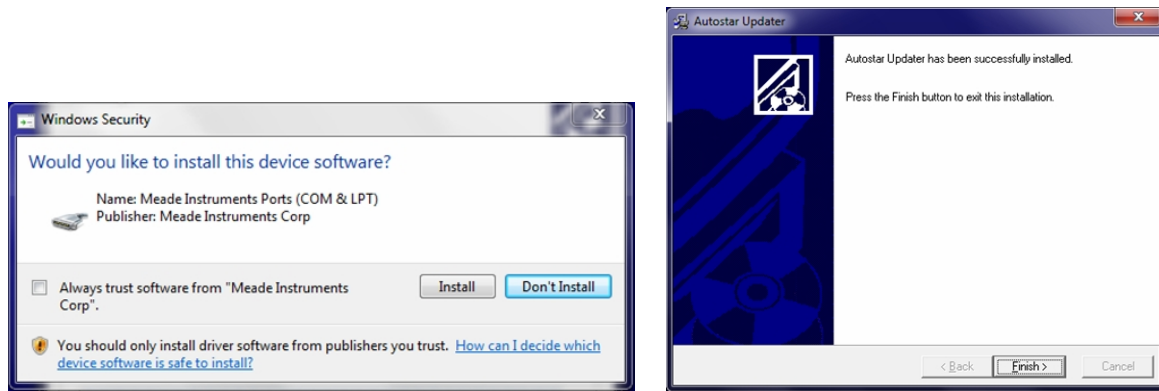


4. Locate the **Au2.EXE** file that was downloaded to your computer. Go to **C:\WINDOWS\Temp** and locate the file called **Au2.EXE** . Double click on the **Au2.EXE** file to begin installation of the new Autostar updater software.

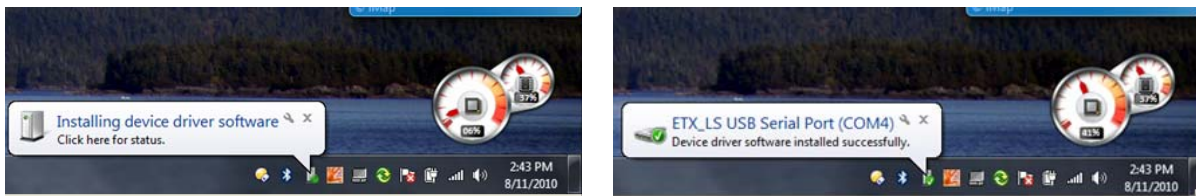
5. Installation of the new Autostar Updater begins. Follow the installer prompts.



- During the installation, the Windows Security will prompt you whether you would like to install the device software. Select **Install**. This will install the LS telescope drivers for Windows 7 64-bit. When the installer completes, click **Finish**.



- Connect the LS telescope to the PC using a USB cable. The PC will recognize the LS telescope and finish the driver installation.



- The LS telescope is now recognized by Windows 7 64-bit.

The End